

AKWA

2013 Annual Report



호주 한인 복지회

Australian Korean Welfare Association

CONTENTS

AKWA MISSION STATEMENT	1
CLIENT SERVICE CHARTER	2
PRESIDENT'S ANNUAL REPORT 2012/2013	4
SGP REPORT	7
DAY CARE 1 REPORT	10
DAY CARE 2 REPORT	12
HEALTHY AGEING SERVICES PROGRAM	14
BOARD OF DIRECTORS	19
AKWA STRUCTURE	20

APPENDIX A: PHOTOS

APPENDIX B: FINANCIAL REPORT

AKWA Mission Statement

The **Australian Korean Welfare Association** aims to promote the welfare of Korean community and to assist the integration of Korean migrants into the Australian community, thereby enabling them to enjoy a meaningful and dignified life. To achieve these general goals, the Association provides relevant information, assistance and services so they gain independence as member of society.

Acknowledgements

AKWA would like to acknowledge the support of the following organisations and individuals for their contribution to us.

Department of Immigration and Citizenship	Sydney City Council
Department of Health and Ageing	NSW Police Service
NSW Department of Ageing, Disability and Home Care	The Smith Family
NSW Department of Housing	Women's Place
NSW Office of Fair Trading	Metro Migrant Resource Centre
Strathfield Municipal Council	Baulkham Hills, Holroyd, Parramatta Migrant Resource Centre
Canterbury City Council	Sydney South West Area Health Service
Burwood Council	Burwood RSL Club
Willoughby City Council	Canterbury Bulldogs League Club
Hornsby Council	Canterbury - Hurlstone Park RSL Club
Parramatta City Council	Australian Nursing Home Foundation
Ryde City Council	The Korean Society of Sydney
Ashfield Council	Overseas Koreans Foundation
Community Relations Commission of NSW	Windermere Nursing Home
NSW Adult Migrant English Service	Spring Institute of Cancer Aid Inc
Consulate General of the Republic of Korea	Ryde Uniting Church
Volunteers of AKWA	Hanwoory Presbyterian Church
National Prescription Service	Sydney Full Gospel Church
Canada Bay Council	Korean Catholic Church (Silverwater)
Manly-Warringah-Pittwater Council	Samtur Church
Auburn Council	The Korea Times Australia
Bankstown City Council	UCC Production
	Tosung Korean Restaurant



Client Service Charter

Our Mission

Australian Korean Welfare Association (AKWA) aims to promote the welfare of Korean community and to assist the integration of Korean migrants into the Australian community thereby enabling them to enjoy a more meaningful and dignified life.

Our Areas of Settlement Programs

Australian Korean Welfare Association is an incorporated non-profit community organization.

AKWA assists the members of the Korean community with their settlement needs such as:

- ◆ Settlement information & services
- ◆ Citizenship application and ceremonies
- ◆ Public & community housing
- ◆ Aged care services
- ◆ English as a Second Language provisions for pre-schoolers
- ◆ Youth services

Our Services and Information Provisions

Australian Korean Welfare Association provides the following services in relation to Settlement Grant Program (SGP) funded by Korean patrons donations:

- ◆ Consulting clients on telephone and face to face
- ◆ Referring clients to government and community service providers
- ◆ Building community capacity
- ◆ Planning joint services with relevant service providers
- ◆ Representing the Korean community to the mainstream society and diverse cultural communities.
- ◆ Networking with stakeholders
- ◆ Liaisoning between service providers



Our Service Standards

Our clients are our first priority. In providing these services we will ensure the following:

- ◆ Clients will be dealt with in a professional manner.
- ◆ Clients' information will be kept confidentially
- ◆ Client services will be equitable and unbiased
- ◆ Clients' complaints will be handled with sensitivity.

You can help us by

- ◆ Making a booking for consultation and notifying any cancellation, should the need arise
- ◆ Treating AKWA staff with courtesy.
- ◆ Refraining from offering unjust gifts to AKWA staff.
- ◆ Participating actively in community events organised by AKWA
- ◆ Providing feedback on AKWA services by
 - emailing info@koreanwelfare.org.au
 - writing to Manager PO Box 862 Campsie 2194
 - telephoning on one of the following office numbers

Contact us

- ◆ Phone number (02) 9718 9589
(02) 8094 9188
(M) 0430 559 589
- ◆ E-mail info@koreanwelfare.org.au
- ◆ Website koreanwelfare.org.au
- ◆ Postal Address PO Box 862 Campsie 2194

- ◆ **Campsie Office** 25/94-98 Beamish Street Campsie 2194
- ◆ **Strathfield Office** 1B Bates Street Homebush 2140



President's Annual Report 2012/2013

Message from the President

This is my fourth Annual Report during my presidency and it is my pleasure to present to you the annual report of AKWA for the year ending 30 June 2013.

Much has taken place in the last financial year to strengthen AKWA's profile and awareness in the community as a multi-service community organisation and we have seen the fruits of the many significant achievements as a result. The various projects and programs undertaken over the past year have been well managed to bring us extensive achievements despite our application for the Settlement Grant Program (SGP) funding was unsuccessful for the new financial year commencing in July 2012. Therefore, it would be no overstatement to say the Board of Directors (BOD) members, staff and AKWA volunteers, and many other patrons have worked very hard to achieve the year's fantastic results for the welfare of the Sydney Korean Community. In particular, I would like to highlight AKWA's acquisition of its new office in Campsie for the first time in the history of the organisation. Without these sacrifices and support and hard work, we would have not been able to achieve thus far.

The Programs, Projects and Funding Highlights of 2012 to 2013.

1. Funding management

- One Settlement Grant Program (SGP) funded by the Department of Immigration and Border Protection secured for the next funding year 2013 and 2014.
- Healthy Ageing Program funded by the Department of Health and Ageing, for the selected period of 2012 to 2015.
- Centre Based Day Care funded by Ageing, Disability and Home Care, for the selected period of 2012 to 2015.
- Small community grants were received from the New South Wales Government and the Local Government Community Relations Commission including Willoughby, Parramatta, Canterbury, Burwood, Ryde and Sydney City Council.
- Small grants were received from the Korean Government and Overseas Korean Foundation.
- A generous donation from Burwood RSL Club.
- \$15,000 was anonymously given to AKWA to support SGP work and Korean senior citizens.
- Generous donations were received through the AKWA fundraising night.

2. Centre Based Day Care

The Aged Day Care Centre celebrates its 7th anniversary and continues to provide services for frail elderly people with dementia every Thursday at the Strathfield Community Centre and additionally every Tuesday in partnership with the Australian Nursing Home Foundation of Burwood.



3. Social Support Groups Assistance for the Korean elderly people

This is a provision to gather and support the Korean elderly community through the appointment of social groupings and events. Various activities are run by AKWA, such as painting, dancing, singing, physical exercise, English conversation classes, excursions and picnics, etc.

4. Tosung Korean Restaurant hosts a special lunch for the Korean elderly people every 1st Monday of the month. This event includes more than just great food with singing, informational talks, dancing other musical performances.

5. A special lecture on topics such as Australian multiculturalism, early Australian history, and Australian poems and novels is held once a month.

6. Community information seminars

A variety of information seminars have been executed by AKWA on topics such as Hepatitis, sharing the food and customs, superannuation, small business setup, Tax (ATO), Centrelink, health information services for the elderly, diabetes and a session on cancer especially for women.

7. International Food Cooking Class including cuisines such as Chinese, Italian and Mediterranean.

8. Networking through various community events and workshops with the ATO, the NSW community Relations Commission, Auburn City Council, Strathfield Council, Burwood Council, Willoughby Council, Ryde City Council, Parramatta City Council etc.

9. Board of Directors meetings have been held on a monthly basis.

10. The Annual Strategic Planning Day and Evaluation Day was held in September.

Looking towards the Future

AKWA applied for Deductible Gift Recipient to the ACNC (Australian Charities and Not-For-Profits Commission). Today I am pleased to announce that AKWA is successfully registered as a PBI (Public Benevolent Institute) with ACNC. The ATO will then, endorse AKWA as a DGR institute, provide FBT exemption for AKWA. We will focus on and continue to endeavour to give high standards of service to the newly settled Korean migrants as well as strengthen our services within the area of aged care and our healthy ageing program.

In the long term, AKWA seeks to build a retirement village (Silvertown) for the Korean elderly and/or a Korean-style aged care facility. AKWA, together with a Korean development company, has already applied for a zone modification to use an aged day care facility with Penrith City Council. This will lead to opportunities for AKWA to provide these services to the wider multicultural aged community. Furthermore, as a president, another shared ambition of mine and the AKWA members is to establish an independent AKWA Foundation for the purposes of catering for the elderly as well as the younger generations within the multicultural community we live in.



Words of Appreciation and Thanks

I would like to express my sincere thanks to my staff, volunteers, the members of the Board of Directors, DADHC, DOHA, DIAC and other government groups including Burwood Council, Canterbury City Council, Strathfield Council, Ryde City Council, Willoughby City Council, Parramatta City Council, Sydney City Council, Auburn city Council, the Consulate-General of the Republic of Korea in Sydney and the wider Korean community.

Further, I extend my special thanks to our supporting members, the Hon. Tony Burke MP, the Hon. John Murphy MP, the Hon Phillip Ruddock MP. The Hon. John Alexander MP, the Hon. Greg Smith MP, the Hon. Victor Dominello MP, the Hon. Linda Burney MP, the Hon. Charles Casuscelli MP, the Hon Craig Laundy MP and last but not least, to the Sydney Korean community.

My board members and I return our thanks again to Mr Keith Lee, OAM, former President of AKWA, for his ongoing commitment and devotedness to AKWA, as the longest serving committee member. We cannot imagine AKWA as it stands today without his many efforts and lifetime dedication.

I give my personal thanks to Paul Kim, David Pyo, Jinyeon Jung, my fellow BOD members for their long-term service towards AKWA. I am very grateful for the encouragement and support shown towards AKWA for its services towards the Australian Korean community.

Lastly, I would also like to express my utmost gratitude and willingness to continue serving in this role as the President of AKWA.

Thank you.

John Y. J. Lee

President of Australia Korean Welfare Association



AKWA Settlement Grant Program (SGP)

1. Information Seminar – 2013 Transition to School Seminar in West Ryde

AKWA held the “2013 Transition to School Seminar” on 21st August, 2013 at West Ryde Community Hall in partnership with CMRC, Department of Education & Communities, Relationships Australia, City of Ryde, Ryde Family Support and Good Beginnings Australia.

There were over 50 Korean parents who participated in the seminar. The guest speakers from the Department of Education & Communities delivered the information about how to prepare their child for school and how to understand school systems in Australia. This information session was very helpful for the Korean parents to understand the school system and to educate their children effectively with consideration of both Korean and Australian culture.



2. Information Seminar – 2013 Transition to School Seminar in Hornsby

The Transition to School Seminar was held in Hornsby on 10th September, 2013 by AKWA in partnership with the Department of Education & Communities, Mission Australia, and Hornsby South Public School. It also focused on understanding the education and school systems in Australia which was targeted on the Korean communities in Hornsby area. Participants had Q&A session after the presentation and the seminar was successful.



한국인에게 맞는 초등학교 입학 설명회

미리 알고 준비하면 학교생활이 달라집니다

한국 학부모를 위한 입학 설명회는 Hornsby South Public School에서 주지하며, 앞으로 초등학교에 들어가는 자녀를 둔 부모님과 조부모님들을 모시고 학교에 대한 전반적인 정보와 시스템에 대해 알려 보는 시간입니다. 낯선다는 정보를 줄여서 어떤 것을 따라야 할지 헷갈리시죠? 쉼 준비해야 할지도 모르겠구요... 여러분들의 걱정을 덜어 드리고 적당한 준비를 도와 드리겠습니다. 현재 학교와 학부모로부터 정보를 받으시고 미리 준비하세요.

- 우리 아이에게 알맞는 학교 선택을 하고 싶으신가요?
- 호주 학교는 수업료가 어떻게 이루어 지나요?
- 새로운 교과 개정은 어떤가요?
- 입학 전 준비사항 (부모, 자녀)은 무엇인가요?

2013년 9월 10일 화요일, 9.45am-12.00pm
장소 : Hornsby South Public School
57-63 Clarke Road, Hornsby NSW 2077

등록, 차일드 케어, 간단한 디모가 존재 합니다.
 예약, 문의: 0435 494 696 (이시발라 김)











3. Information Session - Understanding 2013 Tax Time Updates

AKWA also conducted an “Understanding 2013 Tax Time Updates Session” for Korean community on 21st September, 2013 at Parramatta library. This session was organized with AKWA, Parramatta Library, and the Australian Taxation Office. Participants had an opportunity to review the updates which have been made this year and were also able to ask questions during the session.



2013년 납세신고 변경사항에 대한 이해

UNDERSTANDING 2013 TAX TIME UPDATES

한국어 무료 세미나 Free Seminar in Korean

주최: 퍼라민타 시티 오스트레일리아 호주 증권거래위원회 후원하는 퍼라민타 시티 그룹
 Support program with Australian Taxation Office of PARAMOUNTA CITY GROUP

주최자: 내후
 부양가족 혜택 제공
 고령자 및 장애인 혜택 제공
 의료비 및 주택자금 혜택 제공
 개인연금 기금화 혜택 제공
 개인 건강보험 리베이트 면제 혜택

CONTENT:
 Dependent Spouse Tax Offset
 Senior Australians and Pensioner Tax Offset
 Net Medical Expenses Tax Offset
 Medicare Levy Surcharges
 Changes to the Private Health Insurance Rebate

날짜: Date:	2013년 9월 21일 토요일 21 - 9 - 2013, Saturday	
시간: Time	오전 10:30분 ~ 오후 12:00분 10.30am - 12.00pm	
장소: Venue:	퍼라민타 시티 오스트레일리아 150 Collins Street, Melbourne (내셔널 갤러리에서 5분 거리) (내셔널 갤러리에서 5분 거리) (내셔널 갤러리에서 5분 거리)	Paramounta City Australia 150 Collins Street, Melbourne 15. Civic Place, Paramounta 15. Civic Place, Paramounta 15. Civic Place, Paramounta

예약 링크 Bookings are essential

참가신청은 반드시 필수입니다! 필수 링크 **It is compulsory to book! Essential link**

www.paramountacity.com.au/australia/australian-taxation-office
 or 9716 5050 (한국어) or 9716 5050 (English)
 Paramounta City Australia Phone: 9000 0133 (in English)

주최: 퍼라민타 시티 오스트레일리아 호주 증권거래위원회 후원하는 퍼라민타 시티 그룹
 A support program organized by Paramounta City Australia, Australian Taxation Office
 and Australia Securities Exchange Commission





4. Activity – The Family Fun Day and Moon Festival

The Family Fun Day and Moon Festival and AKWA service promotion took place in partnership with CMRC, Australian Asian Cultural Association, the Department of Education and Communities, and etc on 21st September, 2013. The Korean and Chinese community participated in this event to enjoy the Moon Festival and traditional performances.



Aged Day Care 1 Report

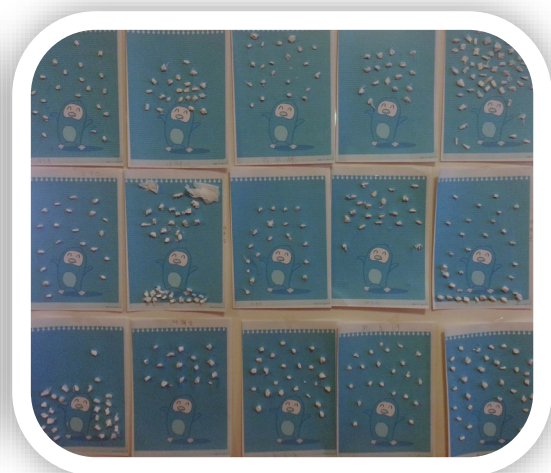
This is the seventh year since AKWA Aged Day Care Project started in May 2007. This project is funded by Ageing, Disability and Home Care (ADHC) under the Commonwealth/State Home and Community Care (HACC) Program. It provides various group and individual Day activities and a broad range of social support for frail and older Korean elderly. These activities promote social interaction and also help them to maintain independent living without isolation.

In accordance with Korean elderly needs AKWA Aged Care has offered many useful information about main stream Service for elderly, such as education programs on maintaining healthy life, nutrition, public hygiene, and environmentally sustainable living ways. All these has satisfied our clients' needs.

Aged Day Care arranges outings or picnics at least once a month, have many types of gentle exercises including exercise for dementia prevention, dancing with traditional music, laughing therapy, and sing along songs which make them happy in a friendly and warm environment. Paper folding, Drawing and coloring for finger movement and various ball games, Mini golf, throwing ring, Sudoku and Korean traditional game of 'yut' encourage them to practice body movements which lead naturally to physical health exercises. There were many Information sessions such as Road Safety, fall prevention, elderly nutrition, podiatry and making a healthy lifestyle and health care for the aged Day Care also provide clients delicious and quality hot lunch.



Drawing & Colouring Activities



Day 1 Clients' craft



Aged Day Care service runs every Thursday from 9am to 3pm. Areas covered by service are Canterbury, Strathfield, Burwood and Marrickville LGA only. There are 20 registered clients and average attendance of registered clients is 90%. Average 1 elderly visitor came to Day Care from other LGA (out of covered area) who wish to be one of Day Care clients. Including visitors, total weekly average program participants are 19 people. This project is run by one part time worker and two casual workers and 6 volunteers, at present.

We are now implementing all services smoothly with 6 years' experience. Elderly clients enjoy all programs and activities performed by this project and they receive support and benefit from them. We always try to improve all our activities and programs for better and more culturally appropriate services. We will continue developing useful programs to meet the needs of our clients under the funding agreement and Aged Day Care standard guidelines

From the beginning of this project until now, Ms. Marina Antonas, HACC Development Project officer, has been very supportive and helpful for this project to run properly and smoothly. We also sincerely give great thanks to Dr Choi who gives talk about health care for our clients and all of Day Care volunteers for their hard work and loving care for clients.



Animal Bowling Game



Exercise for Elderly



Outing for Lunch at RSL Club



Day 1 Group Photo

Aged Day Care 2 Report

This is the fifth year since Korean Dementia Prevention Program (with 2 clients) started in October 2009 from Australian Nursing Home Foundation. In October 2010, AKWA started Aged Day Care 2 Project partnership with ANHF. This project is also funded by Ageing, Disability and Home Care (ADHC) under the Commonwealth/State Home and Community Care (HACC) Program.

Many of programs and activities offered by Day Care 2 has been gradually changing in accordance with clients' needs. It also runs various group and individual day programs but we always try to focus on program and activities related to physical and mental health. Once a month we invite a Korean doctor, Dr Choi to give advice and information on health to maintain healthy and quality life. All client participates gentle exercise, memory games, hand crafts, drawing in color and sing along songs with music from karaoke

We are trying to provide culturally appropriate programs for these frail, mildly disabled people in their old age (a few of them with dementia) but we need to improve knowledge of caring for the elderly with dementia and develop activities and programs for them.



Dementia Info Expo



Info on Legal Services for Elderly



AKWA Aged Day Care 2 service runs every Tuesday from 9am to 3pm. Areas covered by this service are Canterbury, Strathfield, Burwood and Marrickville LGA only. We have 11 registered clients and on average 1~2 regular elderly visitors from other LGA (out of covered area) who wish to be one of Day Care 2 clients. Including visitors, the total weekly average program participants are 11 people. This project is run by two part time workers, one casual worker, 3 regular volunteer and 3 irregular volunteers, at present. AKWA Day Care 2 clients seem to be happy with all programs and activities performed by this project and they receive support and benefit through these sessions.

We would like to say “thank you” to So Wai Centre staff, Briget, Grace and Elisha. They always are very supportive and helpful to us to run Activities and programs. We also give great thanks to all of Day Care 2 volunteers for their hard work and loving care for clients.



Day 2 Lunch Time



Social gathering with AKWA advisor & president

Australian Korean Welfare Healthy Ageing Service Program (HAP)

The aim of the Australian Korean Welfare Healthy Ageing Service Program (HAP) is to strengthen the capacity of the health and aged care sectors to deliver high quality aged care, and to promote healthy ageing and facilitate access by Korean elderly and their carers for significant aged care needs to aged care information and services.

The HAP commenced its project on the 1st July 2012 under Aged Care Service Improvement Healthy Ageing Grants (ACSIHAG) fund which is established by the Commonwealth Department of Health and Ageing. The project is funded to be continued till the 30th June 2015.

The target regions of HAP are:

- Sydney Inner West (Burwood, Canterbury, Strathfield LGAs)
- Northern Sydney (Hornsby, Ryde LGAs)
- South West Sydney (Bankstown LGAs) and/or Sydney Eastern Suburbs
- Western Sydney (Auburn, Baulkham Hills, Parramatta LGAs)

The objectives and outcomes of the HAP are to:

- help older people, their families and carers from the Korean community to make informed decisions about aged care support services and give them increased access to culturally appropriate care;
- work with the HACC funded Multicultural Access (MAPs) workers to ensure that their services are known and accessible to older people and their carers from the target community;
- provide support to mainstream aged care respite and community care providers for the provision of culturally and linguistically appropriate care to clients, their families and carers from the target communities; and
- assist carers for Korean older people to maintain their caring role by giving them access to relevant aged care information and resources on aged care services and ageing issues.

The main activities of the HAP are:

- Information session on aged care services
- Cultural briefing
- Stakeholder engagement
- Resource development and dissemination



Information Sessions: Five information sessions were conducted with total of 170 participants targeting the whole HAP targeted regions with aim to help elderly Koreans and their families and carers understand how Australian aged care system works, what options and services are available to them depending on the level of care that they need and how to access these services.

With aim to enhance the community awareness of aged care services, ten representatives from aged care service providing organizations involved in delivering information on ACAT (Aged Care Assessment Team), HACC (Home and Community Care), TIS (Translating and Interpreting Service) services. Besides, two MAP (Multicultural Access Project) workers and a Community Development Worker from Auburn City Council presented and introduced local support services available.



[Information session held at Regents Park Community Centre on the 14th September 2012 targeting Korean older people and carers in the Western Sydney (left) and information session held at West Ryde Hall on the 25th January 2013 targeting Korean older people and carers in the Northern Sydney (right)]



[Information session held at The Korean Catholic Church of Sydney Archdiocese on the 18th April 2013 for the Church senior group members (left) and information session held at Croydon Health Centre on the 26th March 2013 targeting Korean older people and carers in the Sydney Inner West (left) and]

Cultural Awareness Workshop / Cultural Briefing Sessions: Four sessions were attended by 111 (in total) staff and workers of aged care services covering HAP targeted regions. The purpose of the workshop sessions is to equip them with Korean cultural information and tips on providing Korean clients with culturally and linguistically appropriate care services. The sessions were well received.

HAP Networking: Through the series of PICAC NSW & ACT ACSIHAG (CALD Focus) Network Meeting, established the Healthy Ageing Network and the efficiency of the HAP project worker's role has been emphasized in relation to HAP program scope by sharing resources and experiences and identifying common barriers/challenges against CALD(Culturally and Linguistically Diverse) communities in HAP target regions.

Stakeholder Engagement: Main activities conducted and community events participated being engaged with stakeholders are:

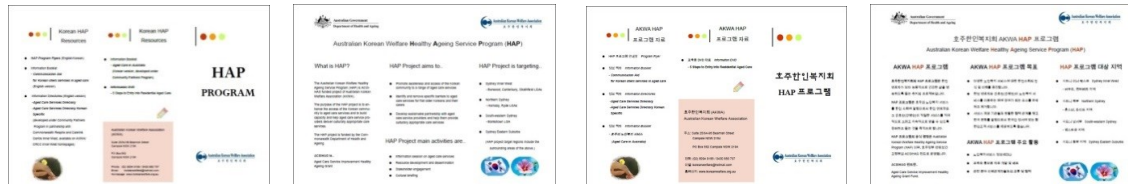
- Auburn Positive Ageing Strategy 2013~2023: HAP organized a focusing group of 9 Korean seniors residing in Auburn LGA to participate in strategy community survey in December 2012 and contributed to a series of Ageing Strategy Forum meetings for seniors and service providers till the draft Auburn City Positive Ageing Strategy 2013~2023 was developed in July 2013.
- HACC DVD in Korean language at Bankstown Area Multicultural Network (BAMN): HAP involved in the DVD processing by participating in Korean language dubbing. The outcome of the DVD is due by the late 2013.
- Multicultural NSW Seniors Week 2013 and Auburn Harmony Day on the 21st March 2013: HAP, being involved as a steering committee member, organized a Korean seminar with topics of falls prevention and healthy and active mindset during Seniors Week 2013. A group of 25 older Koreans in Auburn LGA participated. On Auburn Harmony Day, a group of 9 Korean seniors from *Daehannoinhoi* senior group presented 'Gangnam style' dance and Korean cultural dance performances.



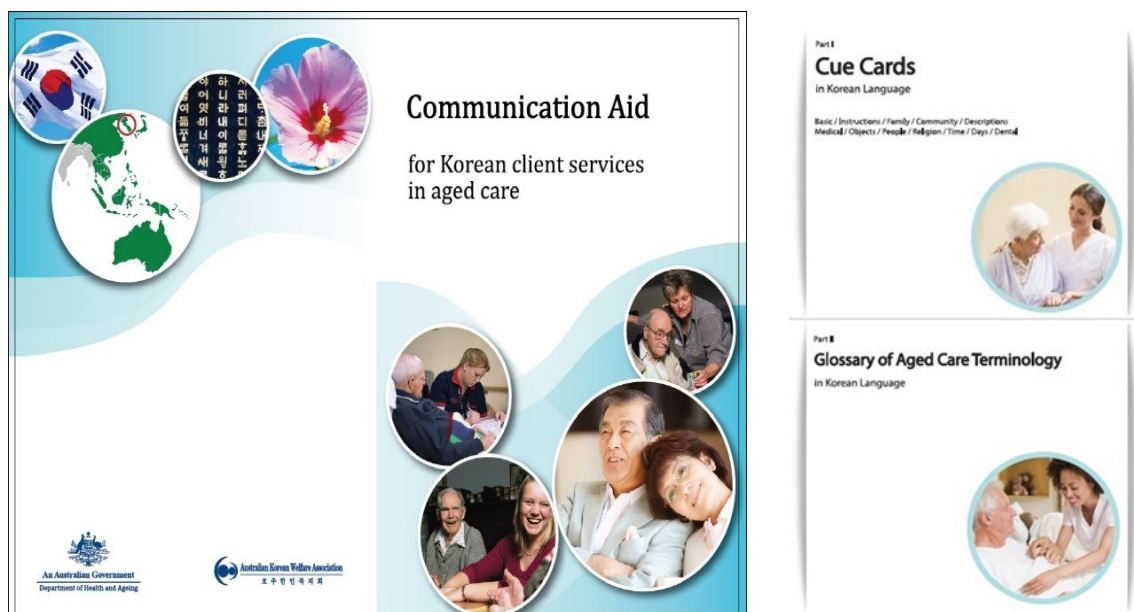
[Falls Prevention Seminar during multicultural NSW Seniors Week 2013 event (left) and 'Gangnam style' dance performance during Auburn Harmony Day event (right) held on the 21st March 2013]



Promotion of HAP Services: HAP brochures in both Korean and English were developed and widely disseminated to the Korean community, aged care service providers and stakeholders. HAP promoted the Australian aged care service and its system and Translating and Interpreting Services (TIS) to the Korean community via Korean air on SBS radio and columns and articles on Korean Newspapers.



Resource Development: A booklet *Communication Aid for Korean client services in aged care* has been published with aim to help aged care service providers efficiently communicate with Korean clients and promote the consistency of translations of aged care information to and from Korean language. The booklet consists of Cue Cards (Part I) and Glossary of Aged Care Terminology (Part II) and HAP acknowledges the work of the Eastern Health for Cue Cards in community languages and Centre for Cultural Diversity in Ageing for Glossary of Aged Care Terminology.



Social Support Group Auburn: A social support group was created on the 1st February 2013 with support of Auburn City Council and the group regularly meets on the 2nd and 4th Fridays each month at Regents Park Community Centre that is provided by the Council. Targeting older Koreans residing in Auburn LGA, HAP aims to ensure of active and healthy ageing of the local Korean seniors by providing various social activities including light exercises, health related programs, information sessions and outings. The ultimate goal of running the group meetings is to identify the isolated and lonely and motivate them to participate in socializing within the community.



[Making own kite to fly over in the 7th group meeting held on the 26th April 2013 (left) and outing to Auburn Botanic Garden in the 15th group meeting held on the 13th September 2013 (right)]

Social Support Group Northern Beaches: The group was created by Manly Warringah Pittwater Community Aid Service Inc. with support of AKWA Community Partners Program (CPP) targeting Korean elderly people who live in Manly, Warringah and Pittwater LGAs. Since its opening on the 11th April 2012, the group has been regularly meeting once a month on the 4th Wednesday at Seniors Citizen Centre in Dee Why with a plan to increase the meeting frequency to twice a month from February 2014.



[Light warming exercise session during Art & Craft workshop in the 4th group meeting held on the 27th June 2012 (left) and outing to Korean Cultural Centre City in the 15th group meeting held on the 10th April 2013 (right)]

Social Support Group Eastern Sydney: HAP in partnership with the Eastern Sydney Multicultural Access Project (ESMAP) at ECCFCSC (Ethnic Child Care, Family and Community Services Co-operative Ltd) set a goal to create a social support group for older Koreans residing in Sydney Eastern suburbs.

BOARD of Directors

Position	Name
President	Mr. John Lee
Secretary	Ms. Helena Lee
Treasurer	Mr. Jonson Yoo
Director	Ms. Jennifer Lim
Director	Mr. Sukil Yi
Director	Mr. Hyun Sang Rho
Director	Mr. Richard Chang
Director	Mr. Jason Choi
Director	Mr. Steve Yang
Director	Mr. Daniel Moon
Special appointed Director	Mr. Keith Lee
Special appointed Director	Mr. Paul Kim
Special appointed Director	Mr. David Pyo
Special appointed Director	Mr. Jin Yeon Jung

How to contact AKWA

Campsie Office: 25/94-98 Beamish St, Campsie NSW 2194

Post: P.O Box 862, Campsie NSW 2194

Email: info@koreanwelfare.org.au

Website: www.koreanwelfare.org.au

Phone: (02) 9718 9589

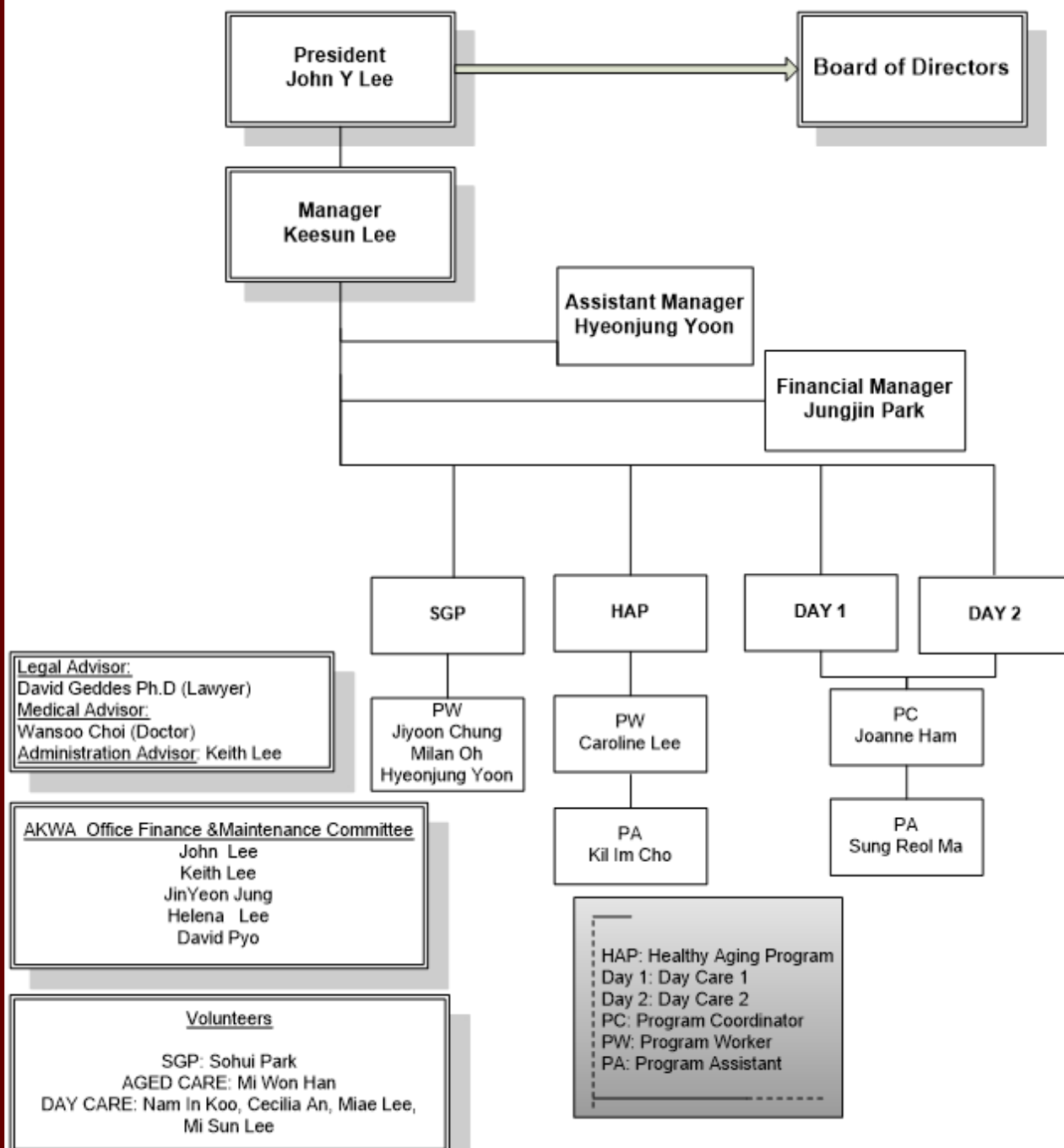
(02) 8094 9188

Mobile: 0430 559 589



AKWA Structure

2013



APPENDIX A

Photos

APPENDIX B

Financial Statements For the year ended 30 June, 2013



APPENDIX A



APPENDIX B

Financial Statements For the year ended 30 June, 2013

